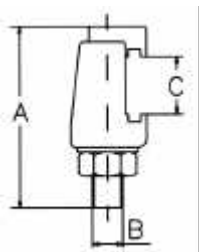


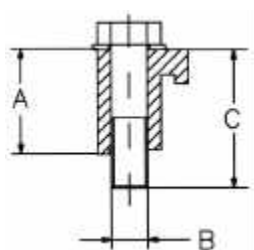
Raccordi per vuoto - Materiale PNEUROP ISO-K

Griffa rinforzata
Clamping screw
AISI 304



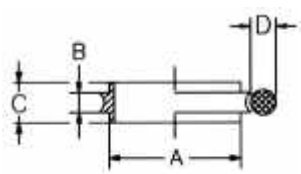
DIAMETRO NOMINALE	A	B	C	D	CODICE
DN 63-250	60	M10	20-32	-	722001
DN 320-630	82	M10	30-52	-	722006

Griffa a parete
Claw grip
Alluminio



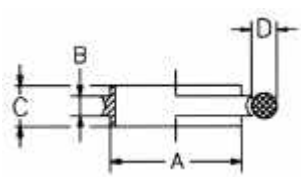
DIAMETRO NOMINALE	A	B	C	D	CODICE
DN 63-100	20	M8	30	-	722010
DN 125-250	25	M10	35	-	722012
DN 320	30	M12	40	-	722015
DN 400-500	30	M12	40	-	722016
DN 630	35	M12	50	-	722018

Anello di centraggio
Centering ring
AISI 304/Viton



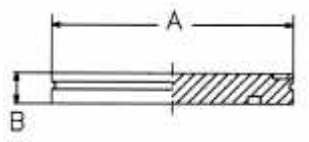
DIAMETRO NOMINALE	A	B	C	D	CODICE
DN 63	70	3,9	8	75X5	722019
DN 100	102	3,9	8	107X5	722020
DN 160	153	5,6	14	161X7	722021
DN 200	213	5,6	14	215X7	722022
DN 250	261	5,6	14	266X7	722023
DN 320	318	5,6	14	329X7	722024
DN 400	400	5,6	14	405X7	722025
DN 500	500	5,6	14	506X7	722026
DN 630	650	5,6	14	658X7	722027

Anello di centraggio
Centering ring
Alluminio/Viton



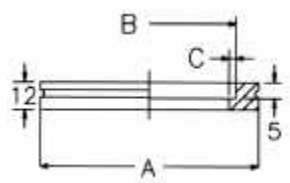
DIAMETRO NOMINALE	A	B	C	D	CODICE
DN 63	70	3,9	8	75X5	722028
DN 100	102	3,9	8	107X5	722029
DN 160	153	5,6	14	161X7	722030

Flangia cieca
Blanking flange
AISI 304L



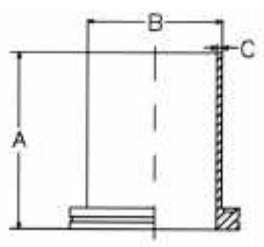
DIAMETRO NOMINALE	A	B	C	D	CODICE
DN 63	95	12	-	-	722031
DN 100	130	12	-	-	722032
DN 160	180	12	-	-	722033
DN 200	240	12	-	-	722034
DN 250	290	12	-	-	722035

Flangia a saldare
Welding flange
AISI 304L



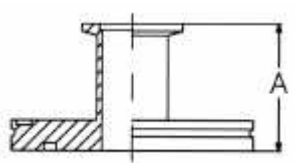
DIAMETRO NOMINALE	A	B	C	D	CODICE
DN 63	95	76	3	-	722036
DN 100	130	108	3	-	722037
DN 160	180	159	3	-	722038
DN 200	240	219	3	-	722039
DN 250	290	267	3	-	722040

Flangia con tubo
Port
AISI 304L



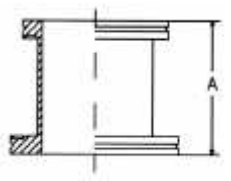
DIAMETRO NOMINALE	A	B	C	D	CODICE
DN 63	100	76	3	-	722041
DN 100	100	108	3	-	722042
DN 160	100	159	3	-	722043
DN 200	100	219	3	-	722044
DN 250	100	267	3	-	722045

Adattatore ISO-K/KF
Adapter piece ISO-K/KF
AISI 304L



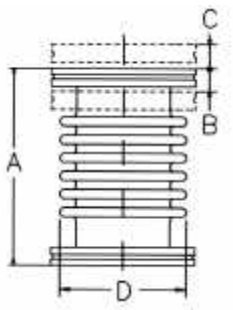
DIAMETRO NOMINALE	A	B	C	D	CODICE
DN 63 ISO-K / 25 KF	40	-	-	-	722046
DN 63 ISO-K / 40 KF	40	-	-	-	722047
DN 100 ISO-K / 25 KF	40	-	-	-	722048
DN 100 ISO-K / 40 KF	40	-	-	-	722049

Riduzione
Reduction
AISI 304L



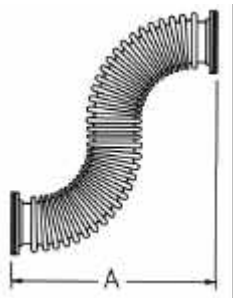
DIAMETRO NOMINALE	A	B	C	D	CODICE
DN 100-63	50	-	-	-	722050
DN 160-63	50	-	-	-	722051
DN 160-100	50	-	-	-	722052
DN 200-160	50	-	-	-	722053
DN 250-160	50	-	-	-	722054

Soffietto
Bellows
AISI 304L - AISI 316L



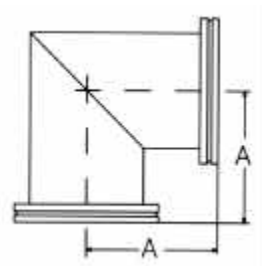
DIAMETRO NOMINALE	A	B	C	D	CODICE
DN 63	130	10	7	90	722055
DN 100	130	10	7	128	722056
DN 160	150	10	7	175	722057
DN 200	230	15	10	235	722058
DN 250	250	15	10	285	722059

Tubo flessibile
Flexible metal hose
AISI 304L - AISI 321



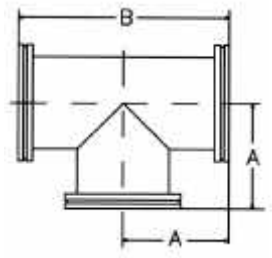
DIAMETRO NOMINALE	A	B	C	D	CODICE
DN 63	250	-	-	-	722060
DN 63	500	-	-	-	722061
DN 63	750	-	-	-	722062
DN 63	1000	-	-	-	722063
DN 100	250	-	-	-	722064
DN 100	500	-	-	-	722065
DN 100	750	-	-	-	722066
DN 100	1000	-	-	-	722067
DN 160	250	-	-	-	722068
DN 160	500	-	-	-	722069
DN 160	750	-	-	-	722070
DN 160	1000	-	-	-	722071

Angolo 90°
90° Elbow
AISI 304L



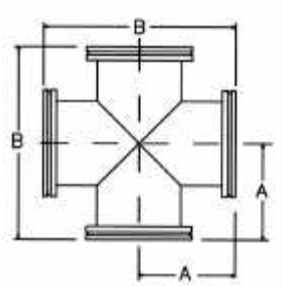
DIAMETRO NOMINALE	A	B	C	D	CODICE
DN 63	88	-	-	-	722072
DN 100	108	-	-	-	722073
DN 160	138	-	-	-	722074
DN 200	200	-	-	-	722075
DN 250	208	-	-	-	722076

Raccordo a 'T'
Tee piece
AISI 304L



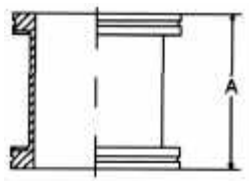
DIAMETRO NOMINALE	A	B	C	D	CODICE
DN 63	88	176	-	-	722077
DN 100	108	216	-	-	722078
DN 160	138	276	-	-	722079
DN 200	200	400	-	-	722080
DN 250	208	416	-	-	722081

Croce
Cross piece
AISI 304L



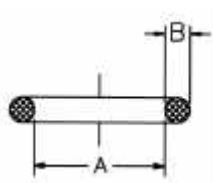
DIAMETRO NOMINALE	A	B	C	D	CODICE
DN 63	88	176	-	-	722082
DN 100	108	216	-	-	722083
DN 160	138	276	-	-	722084
DN 200	200	400	-	-	722085
DN 250	208	416	-	-	722086

Prolunga
Intermediate piece
AISI 304L



DIAMETRO NOMINALE	A	B	C	D	CODICE
DN 63	100	-	-	-	722087
DN 100	100	-	-	-	722088
DN 160	100	-	-	-	722089
DN 200	100	-	-	-	722090
DN 250	100	-	-	-	722091

O-Ring
O-Ring
Viton

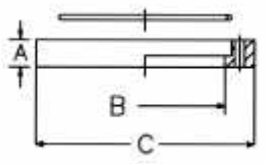


DIAMETRO NOMINALE	A	B	C	D	CODICE
DN 63	75	5	-	75X5	722092
DN 100	107	5	-	107X5	722093
DN 160	161	7	-	161X7	722094
DN 200	215	7	-	215X7	722095
DN 250	266	7	-	266X7	722096

Flangia girevole

Collar flange with retaining ring

AISI 304

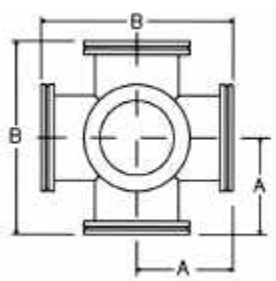


DIAMETRO NOMINALE	A	B	C	D	CODICE
DN 63	12	95,5	130	-	722097
DN 100	12	130,5	165	-	722098
DN 160	16	180,7	225	-	722099
DN 200	16	240,7	285	-	722100
DN 250	16	290,7	335	-	722101

Croce a 6 vie

Double cross-piece

AISI 304L

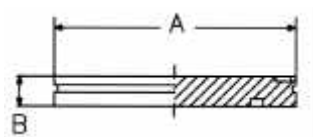


DIAMETRO NOMINALE	A	B	C	D	CODICE
DN 63	88	176	-	-	722102
DN 100	108	216	-	-	722103
DN 160	138	276	-	-	722104
DN 200	200	400	-	-	722105
DN 250	208	416	-	-	722106

Finestra

Window

Plexiglass



DIAMETRO NOMINALE	A	B	C	D	CODICE
DN 63	95	15	-	-	722107
DN 100	130	15	-	-	722108
DN 160	180	20	-	-	722109
DN 200	240	20	-	-	722110
DN 250	290	20	-	-	722111