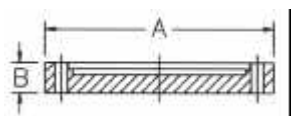


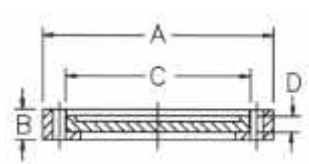
Raccordi per vuoto - Materiale CONFLAT CF

Flangia cieca Blanking flange **AISI 304L**



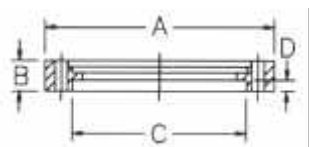
DIAMETRO NOMINALE	A	B	C	D	CODICE
DN 16 CF	34,0	7,3	-	-	723001
DN 40 CF	69,5	13,0	-	-	723002
DN 63 CF	113,5	17,5	-	-	723003
DN 100 CF	152,0	20,0	-	-	723004
DN 160 CF	205,2	22,0	-	-	723005
DN 200 CF	253,0	24,5	-	-	723006

Flangia cieca girevole Rotary blanking flange **AISI 304L**



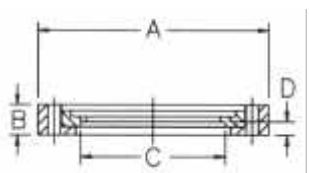
DIAMETRO NOMINALE	A	B	C	D	CODICE
DN 16 CF	34,0	7,3	21,3	5,2	723007
DN 40 CF	69,5	13,0	48,3	7,6	723008
DN 63 CF	113,5	19,0	82,5	12,7	723009
DN 100 CF	152,0	21,5	120,6	14,3	723010
DN 160 CF	205,2	24,0	171,4	15,8	723011
DN 200 CF	253,0	24,5	222,2	17,1	723012

Flangia a saldare Welding flange **AISI 304L**



DIAMETRO NOMINALE	A	B	C	D	CODICE
DN 16 CF	34,0	7,3	18,2	3,0	723013
DN 40 CF	69,5	13,0	38,2	7,5	723014
DN 63 CF	113,5	17,5	70,3	7,5	723015
DN 100 CF	152,0	20,0	108,3	9,0	723016
DN 160 CF	205,2	22,0	159,3	10,0	723017
DN 200 CF	253,0	24,5	206,3	12,0	723018

Flangia a saldare girevole Rotary welding flange **AISI 304L**

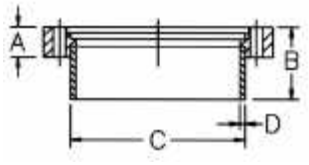


DIAMETRO NOMINALE	A	B	C	D	CODICE
DN 16 CF	34,0	7,3	18,2	3,0	723019
DN 40 CF	69,5	13,0	38,2	7,5	723020
DN 63 CF	113,5	19,0	70,3	9,5	723021
DN 100 CF	152,0	21,5	108,3	10,5	723022
DN 160 CF	205,2	24,0	159,3	12,0	723023
DN 200 CF	253,0	24,5	206,3	12,0	723024

Flangia con tubo

Flange with pipe socket for welded connections

AISI 304L

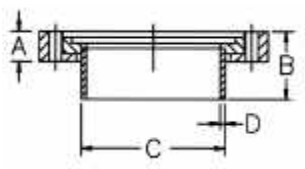


DIAMETRO NOMINALE	A	B	C	D	CODICE
DN 16 CF	7,3	38	18	1,0	723025
DN 40 CF	13,0	53,0	38,0	1,5	723026
DN 63 CF	17,5	57,0	70,0	3,0	723027
DN 100 CF	20,0	60,0	108,0	3,0	723028
DN 160 CF	22,0	62,0	159,0	3,0	723029

Flangia girevole con tubo

Rotary flange with pipe socket for welded connections

AISI 304L

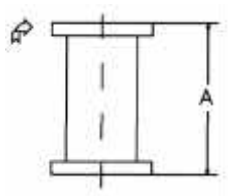


DIAMETRO NOMINALE	A	B	C	D	CODICE
DN 16 CF	7,3	12,0	18	1,0	723030
DN 40 CF	13,0	33,0	38	1,5	723031
DN 63 CF	19,0	49,0	70	3,0	723032
DN 100 CF	21,5	52,0	108	3,0	723033
DN 160 CF	24,0	54,0	159	3,0	723034


Prolunga

Intermediate piece

AISI 304L



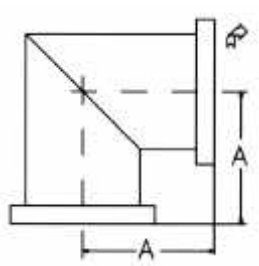
DIAMETRO NOMINALE	A	B	C	D	CODICE
DN 16 CF	76	-	-	-	723035
DN 40 CF	126	-	-	-	723036
DN 63 CF	210	-	-	-	723037
DN 100 CF	270	-	-	-	723038
DN 160 CF	334	-	-	-	723039

 Flangia girevole - Rotary flange


Angolo 90°

90° Elbow

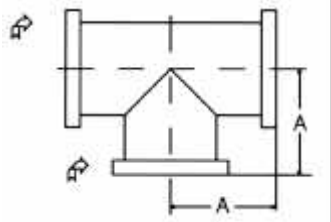
AISI 304L



DIAMETRO NOMINALE	A	B	C	D	CODICE
DN 16 CF	38	-	-	-	723040
DN 40 CF	63	-	-	-	723041
DN 63 CF	105	-	-	-	723042
DN 100 CF	135	-	-	-	723043
DN 160 CF	167	-	-	-	723045

 Flangia girevole - Rotary flange

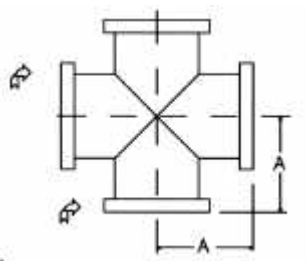
Raccordo a 'T'
Tee piece
AISI 304L



DIAMETRO NOMINALE	A	B	C	D	CODICE
DN 16 CF	38	-	-	-	723046
DN 40 CF	63	-	-	-	723047
DN 63 CF	105	-	-	-	723048
DN 100 CF	135	-	-	-	723049
DN 160 CF	167	-	-	-	723050

Flangia girevole - Rotary flange

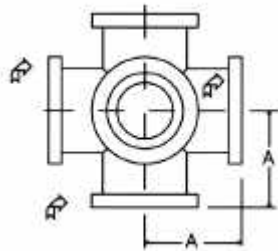
Croce
Cross piece
AISI 304L



DIAMETRO NOMINALE	A	B	C	D	CODICE
DN 16 CF	38	-	-	-	723051
DN 40 CF	63	-	-	-	723052
DN 63 CF	105	-	-	-	723053
DN 100 CF	135	-	-	-	723054
DN 160 CF	167	-	-	-	723055

Flangia girevole - Rotary flange

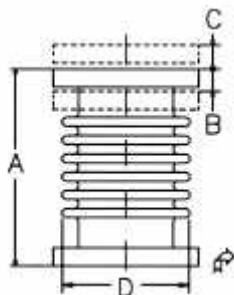
Croce a 6 vie
Double cross piece
AISI 304L



DIAMETRO NOMINALE	A	B	C	D	CODICE
DN 16 CF	38	-	-	-	723056
DN 40 CF	63	-	-	-	723057
DN 63 CF	105	-	-	-	723058
DN 100 CF	135	-	-	-	723059
DN 160 CF	167	-	-	-	723060

Flangia girevole - Rotary flange

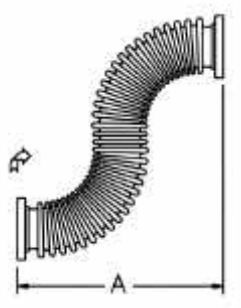
Croce a 6 vie
Double cross piece
AISI 304L



DIAMETRO NOMINALE	A	B	C	D	CODICE
DN 16 CF	76	7	7	28	723061
DN 40 CF	126	10	7	50	723062
DN 63 CF	150	10	7	90	723063
DN 100 CF	220	10	7	128	723064
DN 160 CF	230	10	7	175	723065

Flangia girevole - Rotary flange

Tubo flessibile
Flexible metal hose
AISI 304L - AISI 321



DIAMETRO NOMINALE	A	B	C	D	CODICE
DN 16 CF	250	-	-	-	723066
DN 16 CF	500	-	-	-	723067
DN 16 CF	750	-	-	-	723068
DN 16 CF	1000	-	-	-	723069
DN 40 CF	250	-	-	-	723070
DN 40 CF	500	-	-	-	723071
DN 40 CF	750	-	-	-	723072
DN 40 CF	1000	-	-	-	723073

Flangia girevole - Rotary flange

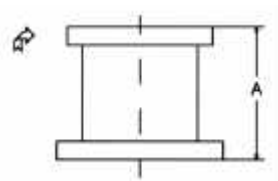
Flangia di riduzione CF/CF
Reducing flange CF/CF
AISI 304L



DIAMETRO NOMINALE	A	B	C	D	CODICE
DN 40-16 CF	15	-	-	-	723074
DN 63-40 CF	24	-	-	-	723075
DN 100-40 CF	24	-	-	-	723076
DN 100-63 CF	24	-	-	-	723077
DN 160-40 CF	24	-	-	-	723078
DN 160-63 CF	24	-	-	-	723079
DN 160-100 CF	24	-	-	-	723080

Flangia girevole - Rotary flange

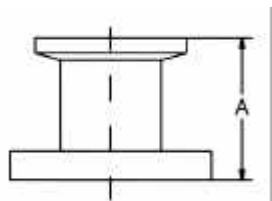
Riduzione CF/CF
Reducing piece CF/CF
AISI 304L



DIAMETRO NOMINALE	A	B	C	D	CODICE
DN 40-16 CF	45	-	-	-	723081
DN 63-40 CF	75	-	-	-	723082
DN 100-63 CF	95	-	-	-	723083
DN 160-100 CF	105	-	-	-	723084

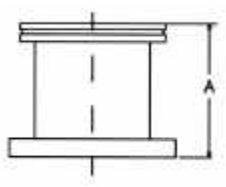
Flangia girevole - Rotary flange

Riduzione CF/CF
Reducing piece CF/CF
AISI 304L



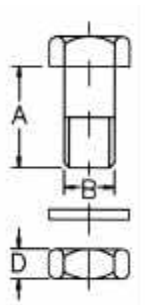
DIAMETRO NOMINALE	A	B	C	D	CODICE
DN 16CF-16KF	36	-	-	-	723085
DN 40CF-16KF	36	-	-	-	723086
DN 40CF-25KF	36	-	-	-	723087
DN 40CF-40KF	50	-	-	-	723088
DN 63CF-40KF	50	-	-	-	723089

Adattatore CF/ISO-K
Transition piece CF/ISO-K
AISI 304L



DIAMETRO NOMINALE	A	B	C	D	CODICE
DN 63CF-63ISOK	90	-	-	-	723090
DN 100CF-100ISOK	90	-	-	-	723091
DN 160CF-100ISOK	90	-	-	-	723092
DN 160CF-160ISOK	90	-	-	-	723093
DN 200CF-200ISOK	90	-	-	-	723094

Bulloneria
Set of hexagonal bolts
AISI 304

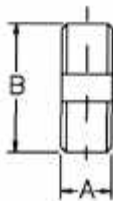


DIAMETRO NOMINALE	A	B	C	D	CODICE
DN 16 CF	20	M4	6*	4,0	723095
DN 40 CF	35	M6	6*	4,8	723096
DN 63 CF	50	M8	8*	6,4	723097
DN 100 CF	55	M8	16*	6,4	723098
DN 160 CF	55	M8	20*	6,4	723099

Confezioni da 25 pz. - 25 pcs. each set

* Minimo per connessione - Minimum for connection

Prigionieri
Set of stud screws
AISI 304

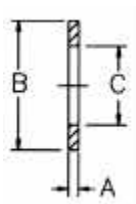


DIAMETRO NOMINALE	A	B	C	D	CODICE
DN 16 CF	M4	20	6*	-	723100
DN 40 CF	M6	30	6*	-	723101
DN 63 CF	M8	35	8*	-	723102
DN 100 CF	M8	35	16*	-	723103
DN 160 CF	M8	50	20*	-	723104

Confezioni da 25 pz. - 25 pcs. each set

* Minimo per connessione - Minimum for connection

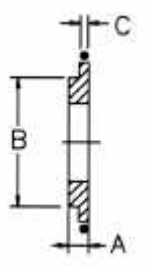
Prigionieri
Set of stud screws
Rame / Copper



DIAMETRO NOMINALE	A	B	C	D	CODICE
DN 16 CF	2	21,3	16,2	-	723105
DN 40 CF	2	48,1	36,8	-	723106
DN 63 CF	2	82,4	63,6	-	723107
DN 100 CF	2	120,5	101,7	-	723108
DN 160 CF	2	171,3	152,5	-	723108B

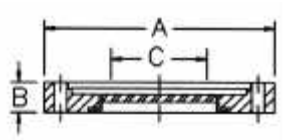
Confezioni da 10 pz. - 10 pcs. each set

Anello di centraggio
Centering ring
AISI 304L/Viton



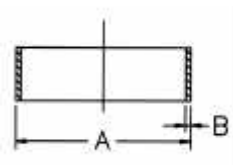
DIAMETRO NOMINALE	A	B	C	D	CODICE
DN 40 CF	5	34,7	34,5X3,5	-	723109
DN 63 CF	7	63,7	62,8X5,3	-	723110
DN 100 CF	7	101,7	101,0X5,3	-	723111
DN 160 CF	7	152,7	151,8X5,3	-	723112

Finestra
Window
AISI 304L/Pyrex



DIAMETRO NOMINALE	A	B	C	D	CODICE
DN 16 CF	34,0	7,3	12,5	-	723113
DN 40 CF	69,5	13,0	32,7	-	723114
DN 63 CF	113,5	17,5	52,1	-	723115
DN 100 CF	152,0	20,0	92,2	-	723116
DN 160 CF	202,5	22,0	137,4	-	723117

Finestra
Window
AISI 304L/Pyrex



DIAMETRO NOMINALE	A	B	C	D	CODICE
DN 16 CF	18	1,0	-	-	723118
DN 40 CF	38	1,5	-	-	723119
DN 63 CF	70	3,0	-	-	723120
DN 100 CF	108	3,0	-	-	723121
DN 160 CF	159	3,0	-	-	723122